



# Extra Clean And Pure

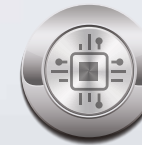
## PENTAIR Dual-Faucet Water Purifier



Grade-1 Water Efficiency;  
High Performance and  
Energy Saving



Dual-Faucet Design;  
Free Flow of  
Potable Water



Smart Display;  
Reminder for Filter  
Replacement



Patented Integrated  
Water-Route



Smart, Sustainable Water Solutions.  
**FOR LIFE.**



### Pentair Offices in South East Asia

#### Singapore

390 Havelock Road  
#04-01 King's Centre  
Singapore 169662  
Tel: +6567685900

#### Philippines

5th Floor MAIA Suites  
1747 Nicanor Garcia Street corner  
D.Oliman Street Makati City, Philippines  
Tel: +632824 3825

#### Thailand

16th Floor, The Ninth Towers Grand RAMA 9,  
Tower B 33/4 Rama 9 Road, Huaykwang  
Bangkok 10310, Thailand  
Tel: +6621681092

[pentair.com](http://pentair.com)

All Pentair trademarks and logos are owned by Pentair. All other brands or product names are trademarks or registered marks of their respective owners. Because we are continuously improving our products and services, Pentair reserves the right to change specifications without prior notice.

Pentair is an equal opportunity employer.

S2000-a 20/01 ©2020 Pentair. All Rights Reserved.

© Notice / <sup>TM</sup> Ownership Statement

Smart, Sustainable Water Solutions.  
**FOR LIFE.**



At Pentair, we believe the health of our world depends on reliable access to clean water. We deliver a comprehensive range of smart, sustainable water solutions to homes, business and industry around the world. Our industry leading and proven portfolio of solutions enables people, business and industry to access clean, safe water. Whether it's improving, moving, or enjoying water, we help manage the world's most precious resource. Smart, Sustainable Water Solutions. For Life.

## Extra Clean And Pure

Simple, easy, for top purity

Purify your body and mind in the simplest way

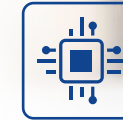
Happiness starts from a glass of clean and pure water



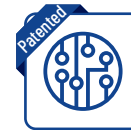
Grade-1  
Water  
Efficiency



Dual-Faucet  
Design



Smart Digital  
Display



Integrated  
Water-Route  
Board



Sleek  
Minimalist  
Design



3-Step  
Cartridge  
Replacement



## Truly Water-Saving To Maximise Efficiency

Elevated Efficiency. **FOR LIFE.**

### Top water efficiency for less water consumption

Enjoy purified water while achieving water saving

Professionally certified Grade-1 water efficiency

The best of both worlds: Energy Saving and environmental friendly

\*As required by GB34914-2017 \*Minimum allowable value of water efficiency and water efficiency grades for reverse osmosis drinking water treatment purifiers, there are 5 grades of water efficiency for reverse osmosis water purifiers; the highest being Grade-1. Water purifier must attain at least the Grade-2 to be classified as water-saving water purifier.



## Dual-Faucet Design for Simplicity of Use

Innovation. FOR LIFE.

Equipped with Two filtration modes; make the choice as required

An avant-garde design, a breakthrough in water purifier design that offers both potable pure water or clean water for hygiene within a single machine



### Clean water for hygiene

Cleaning vegetables and fruits; rinsing rice; washing utensils and tableware

### Potable pure water

For drinking; for cooking rice and soups; also good for making coffee or tea

## Smart Digital Display, Advanced and Trendy

Smart Solutions. FOR LIFE.

Smart visual display showing quality of purified water

LED display panel; LED ring light on faucet  
Water leakage alarm; Automatic flushing  
A clear view of water quality and cartridge lifespan



Filtration Efficiency Display (TDS Value)



Status Indicator (Processing; Flushing; Leakage; Abnormality)



Lifespan Display (Shows remaining lifespan of cartridge)



Function Buttons (Select; Flush; Reset)



\* We consume far more water domestically in rinsing rice and cleaning vegetables and utensils than drinking. One single RO membrane would struggle to cater for all these demands. It not only damages the RO membrane prematurely, but also results in large quantity of waste water – a great waste of natural resource.

\* The dual-faucet water purifier separates hygienic water from drinking water. Clean water for daily washing usage passes only through the first filtration and bypasses the RO membrane filtration. This not only effectively protects the RO membrane to lengthen its lifespan, but also enables huge saving of water.

## Patented Integrated Water-Route Board: Worry-free Cartridge management

Unmatched Reliability. **FOR LIFE.**

**Integrated water-route technology for easy and safe use**

Pentair water purifier uses patented integrated water-route board

Much lower probability of water leakage ensures safe usage

Much easier and safer cartridge replacement



## Compact and Space-Saving Design

Pure Precision. **FOR LIFE.**

**Sleek, petite and minimalist, for a modern feel**

Sleek and compact design fits into smaller homes. With more space, you and your family can take life light and easy.

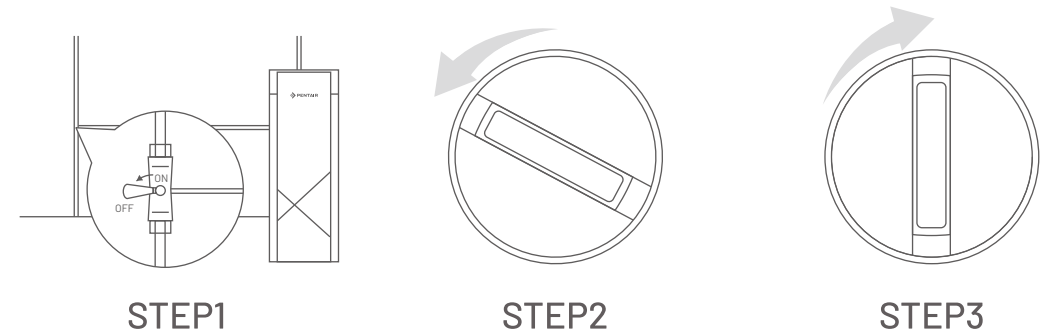


## Fast Cartridge Replacement for Elegant Lifestyle

Pure Relaxation. **FOR LIFE.**

**Integrated Cartridge element; Quick and easy 3-step cartridge replacement**

An integrated quick-change cartridge – only 3 steps to complete replacement  
A built-in auto-shutoff valve enables safe and convenient cartridge replacement.



**STEP1**  
Turn off the 3-way ball valve; shutdown the water purifier; unplug the power

**STEP2**  
Twist 60° anti-clockwise; unlock; remove old cartridge.

**STEP3**  
Place new cartridge onto corresponding cartridge slot, as shown in the figure above; twist 60° clockwise; installation is now complete.

### Pentair Dual Faucet Water Purifier Technical Specification

MODEL	S2000-a
RO Membrane Performance	50GPD
System Flowrate	1.5L/min
Dual Faucets	Pure Water and Clean Water
Appearance	Cabinet Type
Product Dimensions	438 x 132 x 361mm
Inlet Water Quality	Chlorinated City Water
Inlet Water Pressure	15 - 55 PSI
Operating Pressure	60 - 110 PSI
Operating Environment	Ambient temperature 4°C-40°C, relative humidity ≤90% (indoors)
Power Supply	110-220V, 50/60Hz
Power	25W
Display	Cartridge Lifespan Progress Bars + TDS Value + Flushing Status Indicator + Leakage Alarm Function Buttons: Select Button; Flush Button; Reset Button
Leakage Alarm	Display + Beep
Cartridge Type	Disposable Cartridge
Booster Pump	Built-In
Water Storage Tank	External